



**GRAHN**  
POU YON AYITI TOU NÈF

# 4<sup>e</sup> Triennial Report GRAHN-Monde **2019-2021**

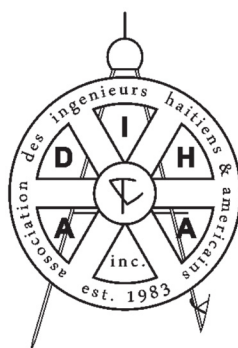
Report covering the period from

January 1<sup>er</sup> 2019 to December 31, 2021

## GRAHN Institutional Members



**FLH**



## ACKNOWLEDGEMENTS

---

Designed and coordinated by Samuel Pierre with the collaboration of Mélissa Georges, this report benefited from the contribution of several GRAHN-World leaders who are all warmly thanked here: Dodly Alexandre, Reynald Altéma, Carine Bernadel, Valéry Dantica, James Féthière, Kerline Joseph, Michel Julien, Raymond Kernizan, Marie-Hélène Lindor, Tatiana Nazon, Bénédique Paul and Pierre Toussaint. The linguistic revision of the report was carried out by Laurence Gauthier, a member of GRAHN, whom we thank warmly.





## SUMMARY

---

Since its creation on January 20, 2010, the Groupe de réflexion et d'action pour une Haïti nouvelle (GRAHN-World) has established itself in five countries: Canada, United States, France, Haiti and Switzerland. GRAHN is the bearer of the utopia of a new Haiti. More concretely, we want Haiti to become an emerging country. Such an ideal is increasingly confronted with the despair of the vast majority of Haitians and with the disbelief of the so-called friendly countries of Haiti, which do not believe that such an ideal is achievable, unless a miracle occurs.

Over the past three years, GRAHN has accomplished a great deal within its limited means. This triennial report reflects that. Indeed, from January 1<sup>er</sup> 2019 to December 31, 2021, GRAHN has tirelessly continued its fight towards a new Haiti. Progress has been made on many fronts.

In terms of teaching and university research, the Institute of Science, Technology and Advanced Studies of Haiti (ISTEAH) has reached a turning point by positioning itself as the university of the new Haiti: technological, international and entrepreneurial. At the preschool and elementary levels, the Paul-Gérin-Lajoie Early Childhood Center has reached cruising speed with an enrollment of 115 children, while the Anne-Nelly-Saint-Preux Elementary School in Génipailler has more than 100 students from first to fourth grade. In addition, there are vocational and technical training activities in construction trades for young people in the region, some of whom were later hired in our construction projects in the Cité du savoir. The journal *Haiti Perspectives* and the GRAHN-World Press complete GRAHN's knowledge dissemination ecosystem.

Our educational programs do not stop at formal training. They also extend to the community and to adults, with our Community Education Program (CEP) which includes three components: citizenship education, health education and financial literacy. The CEP is aimed at parents of children who attend the Cité du savoir and people who live in the area.

In the area of health, we have set up a preventive medicine program for the population of Génipailler, as a prelude to the AMHE-GRAHN Community Health Center that is currently being built there. In the same vein, we have created the Mental Health Unit which intervenes with the populations of the Cité du savoir and ISTEAH, through teleconsultation sessions using videoconferencing. This unit brings together general practitioners, psychiatrists, psychologists, nurses and social workers from Haiti, Canada, France and the United States.

In the field of economics, we have established an extensive entrepreneurship program in the City of Knowledge, supported by the Pole of Innovation of the Great North (PIGrAN Incubator-Accelerator). This program has given birth to five companies: Bureau d'ingénierie de la Cité du savoir (BICS), PIGrAN Blòk, PIGrAN Diò, PIGrAN Agro-Industries, PIGrAN Centre de services aux entreprises.

At a time when some eminent members of GRAHN have already died, we must prepare a new generation that shares our utopia of a new Haiti. To the living among us, we say a big thank you for having accepted to fight the good fight, that of working for the advent of a new and better nation to bequeath to present and future generations.



## TABLE OF CONTENTS

ABSTRACT . . . . .	3
LIST OF FIGURES . . . . .	5
LIST OF TABLES . . . . .	6
<b>1.</b> Preamble . . . . .	7
<b>2.</b> Structuring activities . . . . .	8
2.1 ISTEAH . . . . .	8
2.1.1 Summary presentation of ISTEAH . . . . .	8
2.1.2 Place of ISTEAH in Haitian society . . . . .	9
2.1.3 ISTEAH 2.0: the University of the new Haiti . . . . .	11
2.1.4 Faculty School Management . . . . .	19
2.1.5 Expert Panel Evaluation Report . . . . .	19
2.2 PIGraN - City of Knowledge . . . . .	20
2.2.1 General presentation of the PIGraN project . . . . .	21
2.2.2 Evolution of the Cité du savoir . . . . .	22
2.2.3 The Cité du savoir's entrepreneurial activities . . . . .	46
2.2.4 Governance of the Cité du savoir . . . . .	47
2.3 Haiti Perspectives . . . . .	48
2.4 GRAHN-World Press . . . . .	48
<b>3.</b> Branch activities . . . . .	50
3.1 GRAHN-Canada . . . . .	51
3.2 GRAHN-USA . . . . .	51
3.3 GRAHN-France . . . . .	51
3.4 GRAHN-Haiti . . . . .	52
3.5 GRAHN-Switzerland . . . . .	52

<b>4.</b>	Thematic committees . . . . .	54
4.1	ATERI . . . . .	54
4.2	Economic and social development . . . . .	56
4.3	Education and culture . . . . .	59
4.4	State, governance and justice . . . . .	62
4.5	Public Health . . . . .	64
<b>5.</b>	The Program Committee. . . . .	65
<b>6.</b>	The Board of Directors . . . . .	66
6.1	Composition of the Board of Directors . . . . .	66
6.2	Regular meetings . . . . .	66
6.3	Recruiting new members . . . . .	67
<b>7.</b>	Conclusion and perspectives . . . . .	68
APPENDICES		
	Appendix 1: 2019 Financial Statements . . . . .	65
	Appendix 2: 2020 Financial Statements . . . . .	68
	Appendix 3: 2021 Financial Statements . . . . .	70

## LIST OF FIGURES

Figure 1. ISTEAH site in Port-au-Prince .....	10
Figure 2. The concept of PIGraN .....	23
Figure 3. Cité du savoir layout diagram .....	23
Figure 4. Professor of Clinical Psychology of Quebec at Cité du savoir ....	24
Figure 5. Partial view of the Cité du savoir in January 2021 .....	25
Figure 6. Social gathering at PGL .....	26
Figure 7. Three-dimensional plan of the Anne-Nelly-Saint-Preux Basic School	26
Figure 8. Completion of Phase 1 of the Basic School .....	27
Figure 9. Students in Phase 1 of the Basic School .....	27
Figure 10. Computer lab of Haitian-Canadian engineers and scientists.. ....	28
Figure 11. Farah-Saint-Preux Science Laboratory in installation .....	28
Figure 12. Farah-Saint-Preux Science Lab installed .....	29
Figure 13. A view of the Elvire-Joachim Poultry Farm .....	30
Figure 14. External view of BICS .....	31
Figure 15. Main façade of BICS .....	32
Figure 16. View of the rear panel .....	32
Figure 17. BICS reception and meeting room .....	33
Figure 18. BICS Engineering Office .....	33
Figure 19. BICS meeting space .....	34
Figure 20. Views of the main façade of the guardhouse .....	35
Figure 21. Right side view and rear view .....	36
Figure 22. Left side view .....	36
Figure 23. Right side face of the bungalow .....	37
Figure 24. Left side of the bungalow .....	37
Figure 25. Front face of the bungalow .....	38
Figure 26. Rear face of the bungalow .....	38
Figure 27. Fence and guardhouse in yellow .....	39
Figure 28. View of the road to be widened and resurfaced .....	39
Figure 29. View of the entrance sign .....	40
Figure 30. View of the gate and entrance sign .....	40
Figure 31. Night view of the entrance sign .....	41
Figure 32. Sketch of the Graduate School of Business and Entrepreneurship	42
Figure 33. Status of work - Left side and front entrance .....	42
Figure 34. Status of the work - Right side and entrance to the rooms .....	43
Figure 35. Plan of the main façade of the Health Center .....	44
Figure 36. Map of the Health Center courtyard .....	44
Figure 37. Status of the Health Center - main façade .....	45
Figure 38. Status of the Health Center - interior courtyard .....	45
Figure 39. A sample of publications from recent years .....	49
Figure 40. A sample of the works produced in recent years .....	50
Figure 41. Some images from the Haiti - Quebec - Caribbean Film Festival..	62
Figure 42. Thematic Committee Coordination Structure .....	65

## LIST OF TABLES

Table 1.	School of Engineering .....	13
Table 2.	School of Medicine and Health Sciences .....	14
Table 3.	School of Science .....	15
Table 4.	School of Agricultural, Food and Environmental Sciences .....	16
Table 5.	School of Education and Professional Development. ....	16
Table 6.	School of Law .....	17
Table 7.	Graduate School of Business and Entrepreneurship .....	18
Table 8.	Distribution of children attending the CPE in 2020-2021 .....	24
Table 9.	Distribution of children attending the CPE in 2021-2022 .....	24
Table 10.	Distribution of Basic School Students in 2021-2022 .....	30
Table 11.	Geographical distribution of entrepreneurs assisted by FIESS ...	57
Table 12.	Quantitative balance as of December 31, 2021. ....	58

## 1. PREAMBLE

The whole adventure began on January 20, 2010 when - 10 days after the terrible earthquake that hit the Western Department of Haiti hard, causing unprecedented human and material damage - some twenty people gathered at Polytechnique Montréal to found the Groupe de réflexion et d'action pour une Haïti nouvelle: GRAHN. Given the extent of the interest shown by people from other countries, we had the idea of extending the geographical scope of the movement by creating GRAHN-World. Today, GRAHN has branches in five countries: Canada, United States, France, Haiti and Switzerland. GRAHN-World is also about twenty chapters scattered in as many cities or regions: Port-au-Prince, Cap-Haïtien, Acul-du-Nord, Plaine-du-Nord, Milot, Port-Margot, Carice, Hinche, Cayes, Les Anglais, Saint-Marc, Gonaïves, Boston/New England, Mauricie, Montreal, Ottawa/Gatineau, Quebec, Sherbrooke, Geneva, Paris. It is also more than 400 regular members and 12 institutional members, to which are added more than 4000 active sympathizers throughout the world.

It is worth remembering that all the social and economic advances that humanity has known have all started by utopic dreams that have made their way through time and space, in the long run. Our quest for this new Haiti is also the result of a certain utopia carried by people of conviction who are willing to invest themselves with perseverance in positive social transformation, without worrying about the time it will take for tangible results to appear.

What is the definition of this new Haiti that we have made our ideal and the engine of our action? Very concretely, this new Haiti that we desire would be a democratic society, open, more inclusive, less unequal, based on law, solidarity, sharing, education, the cult of the common good and environmental awareness. When GRAHN was created in January 2010, we had the dream of contributing to making Haiti an emerging country by 2030, at the end of an enlightened, hard, serene, methodical, convergent and cumulative work. We have been disappointed by the seemingly unstoppable descent into hell that the country has experienced since then. However, this has not weakened our determination. On the contrary! We have understood that we must take the time to correct the excesses of the last decade and give ourselves an additional decade to rebuild hope and the future. We must therefore postpone the deadline and aim for the 2050 horizon so that Haiti becomes an emerging country. Despite the despair of the vast majority of Haitians and the incredulity of the so-called friendly countries of Haiti, this objective remains achievable if Haiti succeeds in finding its way back to political stability, reason supported by a certain pragmatism, a non-demagogic patriotism, a citizen and state responsibility at all levels of social organization, and a real commitment to the common good and the general interest

This is a reaffirmation in more perspective terms of the tremendous work that GRAHN has accomplished, with very limited resources, since its inception in 2010. This *Triennial Report*, which covers the period from January 1, 2019 to December 31, 2021, is a summary of the vigorous and hopeful actions that the group has carried out relentlessly, despite a socio-political situation that has led many people to throw in the towel, to give up the fight that is already considered lost, to despair of the country that seems to have no future, to believe even that the country may disappear. While understanding the pessimism of these compatriots, GRAHN does not share this defeatism and the following text is there to prove it and to maintain hope.

## 2. STRUCTURING ACTIVITIES

During the period covered by this triennial report, GRAHN has pursued or implemented several structuring actions to improve Haiti and Haitian society. In this section, we will briefly introduce these actions in an illustrative manner, focusing on three of them: the Institute of Science, Technology and Advanced Studies of Haiti (ISTEAH), the Pôle d'innovation du Grand Nord (PIGrAN), the journal *Haiti Perspectives* and the GRAHN-World Press.

### 2.1 ISTEAH

This section begins with a brief presentation of ISTEAH and explains the place of this university institution in Haitian society. It then introduces ISTEAH's recent development as a university of the new Haiti, with its seven faculty schools described briefly. The section ends with an evaluation of ISTEAH by a committee of experts.

#### 2.1.1. Summary presentation of ISTEAH

GRAHN was founded on January 20, 2010 in Montreal, with the goal of contributing to the ongoing recovery of Haiti through sustained and long-term action. It is a global citizen watchdog organization, secular and apolitical, whose mission is to work for the advent of a new Haiti as defined above.

GRAHN created the Institute of Science, Technology and Advanced Studies of Haiti (ISTEAH) in January 2013 with the goal of putting science and technology at the service of development, by training citizens, innovators and leaders able to act competently at the local, regional and national levels, in the quest for an ideal of excellence in actions and interventions. ISTEAH's motto is "Excellence for the common good".

With more than 210 internationally renowned associate professors, more than 600 students in 40 graduate programs (2<sup>e</sup> and 3<sup>e</sup>), as well as Bachelor of Science and Engineering degree programs with nearly 100 students, ISTEAH is the largest university in the country dedicated to advanced studies in science and technology disciplines. With a focus on scientific research, innovation, leadership and citizenship as the basis for socio-economic development, ISTEAH aims to strengthen the scientific capacity of Haitian universities, particularly those in the regions that are often faced with a shortage of skills to provide undergraduate training. It trains master's and doctoral candidates throughout the country, particularly in the regions, to help solve the country's many problems. ISTEAH also provides continuing education and expertise to organizations with specific needs.

#### 2.1.2 Place of ISTEAH in Haitian society

The creation of ISTEAH is innovative in that it is the first Haitian university institution dedicated primarily to graduate training, the next generation of students. Previously, it was necessary to leave one's region and often the country to undertake graduate studies in most fields. Today, ISTEAH contributes to the development of the regions and the entire country through its presence in six cities in Haiti. Figure 1 shows the ISTEAH site in Port-au-Prince.



The enrollment of more than 700 students in 1<sup>er</sup>, 2<sup>e</sup> and 3<sup>e</sup> cycle programs, including approximately 150 at the doctoral level, is a tangible achievement as it is the first time that a university in Haiti has recruited such a large graduate student population. The vast majority of Haitian universities are limited to undergraduate training. Those that do offer graduate training offer a few programs, very few of which are in science and engineering. ISTEAH's presence is beneficial to the entire country, especially outside the capital, where cities have difficulty finding qualified professionals to teach in universities and to fill certain high-level management positions.

The UNESCO Chair in Women and Science for Development is a remarkable achievement in itself as it is the first UNESCO Chair in Haiti. It plays a decisive role in the country in the promotion of scientific careers among young girls and women.

International research internships at Canadian universities for master's and doctoral candidates under the Future Leaders of America Program (FLA) are very promising. This is the first time that students from Haiti have participated in such a program funded by Global Affairs Canada through the Canadian Bureau for International Education (CBIE). The ALTP is an excellent way to expose ISTEAH students to a different scientific culture by visiting research laboratories and sharing world-views and research practices.

The creation of the research centers and the Chair in Agricultural Marketing is an exceptional achievement in the Haitian university environment. No other university in the country has so many research centers involving the 210 associate and regular professors of ISTEAH. In addition, the Chair in Agricultural Marketing remains the only one of its kind in Haiti. These research units constitute the crucible of professional and scientific training in areas where the country has a notorious deficiency.



**Figure 1.** ISTEAH site in Port-au-Prince

In 8 years of existence, here is the quantitative assessment of ISTEAH:

- ▣ Present in **6 cities** in Haiti: **Génipailler-Milot, Cayes, Hinche, Jacmel, Port-au-Prince and Saint-Marc**;
- ▣ **More than 210** professors from Quebec, the rest of Canada, Belgium, the United States, France, Haiti, Morocco, Senegal and Switzerland;
- ▣ **15** volunteer managers;
- ▣ **47** full-time employees: 46 in Haiti and 1 in Quebec;
- ▣ **More than 600** graduate students: 25% PhD, 60% Master's and 15% DESS;
- ▣ **Nearly one hundred** students at the undergraduate level: Bachelor of Science, Civil Engineering and Computer Engineering degrees;
- ▣ **5 research centers**;
- ▣ **A Chair in Agricultural Marketing**;
- ▣ The first UNESCO Chair in Haiti: **the UNESCO Chair in Women and Science for Development**;
- ▣ **11** fields of study ranging from education to engineering to management sciences;
- ▣ **100** degrees offered in over **40** different specialties.
- ▣ **117** graduates as of December 31, 2021.

From a qualitative point of view, ISTEAH's greatest and most lasting achievement is to have succeeded in training and building a network of professionals who are well placed in all the administrative workings of the State and in all the spheres of activity of Haitian society, with an assumed mission to contribute to the country's recovery, to the establishment of the rule of law and to good governance

### 2.1.3 ISTEAH 2.0: the University of the new Haiti

At the dawn of its 10 years of existence, ISTEAH thought it was appropriate to consolidate its achievements and project itself into the future by launching what we called "ISTEAH 2.0". ISTEAH was created by GRAHN to promote the ideal of a new Haiti based on social progress, sustainable economic development, creation and sharing of wealth, commitment to science and democracy, the permanent quest for social justice, and equality between men and women. ISTEAH 2.0 is resolutely in line with this dynamic which remains its *raison d'être*. It is therefore the *University of the new Haiti*.

As a university of the new Haiti, ISTEAH 2.0 has three main characteristics:

- ▣ A technological university;
- ▣ An international university;
- ▣ An entrepreneurial university.

We are already a *technology university*, but we will get stronger. To that end, we are keeping abreast of the latest communication and distance learning technologies. We will also complete our training

offer, notably by creating a School of Medicine and Health Sciences that will be at the forefront of technologies supporting telemedicine.

We are already an *international university* through our faculty, our senior management and our network of partners, including several foreign universities (Polytechnique Montréal, Université de Montréal, HEC Montréal, Université du Québec à Montréal, Université du Québec à Trois-Rivières, Université du Québec en Abitibi-Témiscamingue, University of British-Columbia, Université de Strasbourg, École Centrale de Lyon, INSA de Lyon, École Polytechnique Fédérale de Lausanne, Dartmouth College, etc). ISTEAH also has partnership agreements with AMMA Canada, the International Development Research Centre (IDRC) of Canada, L'Oréal Canada, IVADO and UNESCO. Our institution also plans to welcome a contingent of students from outside the Haitian territory. As for our professors, they have benefited from international research stays, and we want to offer the same possibility to our clientele. We have increased the participation of our faculty in international research projects. Finally, we are in the process of creating a *Chair on the Rule of Law and the Fight against Impunity* and a *Research Centre on National and International Law*.

We are already an *entrepreneurial university* through the businesses we are starting in the City of Knowledge. We have accelerated the business creation process in the Pôle d'innovation du Grand Nord. Indeed, within the framework of the PIGraN - City of Knowledge project, we want to generate jobs for our graduates and others, to turn them into entrepreneurs in order to create wealth for all and fight poverty.

ISTEAH 2.0 is structured in 7 graduate schools which are in fact the equivalent of the faculties found in traditional universities:

- School of Engineering;
- School of Medicine and Health Sciences;
- School of Science;
- School of Agricultural, Food and Environmental Sciences;
- School of Education and Professional Development;
- School of Legal Sciences;
- the Graduate School of Business and Entrepreneurship.

**Table 1.** School of Engineering

PROGRAM	SPECIALTY	GRADES OFFERED			
<b>Engineering</b> (Graduate level)	<ul style="list-style-type: none"> <li>• Computer and Information Technology Engineering</li> <li>• Mining Engineering</li> <li>• Water Resources Engineering</li> <li>• Energy Systems Engineering</li> <li>• Transportation and Infrastructure Engineering</li> <li>• <b>Humanitarian Engineering*</b>.</li> </ul>		DESS	M. Sc. A.	Ph. D.
<b>Engineering</b> (1 <sup>er</sup> cycle)	<ul style="list-style-type: none"> <li>• Civil engineering</li> <li>• Computer Engineering</li> <li>• <b>Climatic and energy engineering</b></li> </ul>	Engineering degree			
<b>Research Unit</b>	• International Center for Research in Information Technology for Development ( <b>CIRTID</b> )				

\* : new specialty

**Table 2.** School of Medicine and Health Sciences

PROGRAM	SPECIALTY	GRADES OFFERED		
<b>Health Sciences</b> (Graduate level)	<ul style="list-style-type: none"> <li>• Public and Community Health</li> <li>• Mental Health</li> <li>• Rehabilitation Sciences</li> <li>• Nursing (IPS) <ul style="list-style-type: none"> <li>- General primary health</li> <li>- Cardiorespiratory care</li> <li>- Anesthesiology</li> <li>- Obstetrics</li> </ul> </li> </ul>		DESS	M. Sc.
<b>Medicine</b> (1 <sup>er</sup> cycle)	• Médecine générale	Physician's diploma		
<b>Research Unit</b>	• Mental Health Unit ( <b>MHU</b> )			

**Table 3.** School of Science

PROGRAM	SPECIALTY	GRADES OFFERED			
<b>Sciences</b> (Graduate level)	<ul style="list-style-type: none"> <li>• Biology and life sciences</li> <li>• Chemistry</li> <li>• Mathematics</li> <li>• Physics</li> <li>• Earth and Atmospheric Sciences</li> </ul>		DESS	M. Sc.	Ph. D.
<b>Sciences</b> (1 <sup>er</sup> cycle)	<ul style="list-style-type: none"> <li>• Mathematics</li> <li>• Mathematics and Computer Science</li> <li>• Mathematics and Statistics</li> <li>• Mathematics and Physics</li> <li>• Biology and Physics</li> <li>• Biology and Chemistry</li> <li>• Chemistry and Physics</li> </ul>	License			
<b>Research units</b>	<ul style="list-style-type: none"> <li>• Center de recherches en mathématiques (<b>CREM</b>)</li> <li>• Center for Research in Molecular and Life Sciences (<b>CRSMV</b>)</li> <li>• UNESCO Chair in Women and Science for Development (<b>FSD</b>)</li> </ul>				

**Table 4.** School of Agricultural, Food and Environmental Sciences

PROGRAM	SPECIALTY	GRADES OFFERED		
<b>Agricultural and food sciences</b>	<ul style="list-style-type: none"> <li>• Marketing of agricultural products</li> <li>• Food Science and Technology</li> </ul>	DESS	M. Sc.	Ph. D.
<b>Environmental Sciences</b>	<ul style="list-style-type: none"> <li>• Agronomy-soil and environment</li> <li>• Environment and climate change</li> <li>• <b>Risk and Disaster Management</b></li> </ul>	DESS	M. Sc.	Ph. D.
<b>Research Unit</b>	<ul style="list-style-type: none"> <li>• Center for Research in Risk Management, Land Use and Environment (<b>CReGRATE</b>)</li> </ul>			

\* : new specialty

**Table 5.** School of Education and Professional Development

PROGRAM	SPECIALTY	GRADES OFFERED		
<b>Education Sciences</b>	<ul style="list-style-type: none"> <li>• Didactics of science and technology</li> <li>• Distance learning and e-learning</li> <li>• Management of educational systems</li> </ul>	DESS	M. Sc.	Ph. D.
<b>Professional and technical training</b>		DESS	M. Sc.	
<b>Research Unit</b>	• Center for Research in Education and Governance ( <b>CREG</b> )			

**Table 6.** School of Legal Sciences

PROGRAM	SPECIALTY	GRADES OFFERED		
<b>Legal Sciences</b>	<ul style="list-style-type: none"> <li>• International law</li> <li>• Business and labor law</li> <li>• Criminology and the fight against corruption</li> </ul>	DESS	M. Sc.	Ph. D.
<b>Research Unit</b>	<ul style="list-style-type: none"> <li>• Center for Research in National and International Law (<b>CReDNI</b>)</li> <li>• Chair on the Rule of Law and the Fight against Impunity (<b>EDLCI</b>)</li> </ul>			



**Table 7.** Graduate School of Business and Entrepreneurship

PROGRAM	SPECIALTY	GRADES OFFERED		
<b>Business Administration</b>	<ul style="list-style-type: none"> <li>• Administration of SMEs and cooperatives</li> <li>• Management of banking and financial services</li> <li>• Accounting and corporate taxation</li> <li>• Heritage and Tourism Administration</li> <li>• Human Resources Management</li> </ul>	DESS	M.B.A.	
<b>Project management</b>	<ul style="list-style-type: none"> <li>• Civil engineering</li> <li>• Architecture and planning</li> <li>• Business and social engineering</li> <li>• Technologies</li> <li>• E-governance</li> </ul>	DESS	M. Sc. A.	
<b>Management of local authorities</b>		DESS	M. Sc.	
<b>Management Sciences</b>		DESS	M. Sc.	Ph. D.
<b>Economic Sciences</b>	<ul style="list-style-type: none"> <li>• Development economics</li> <li>• Social and solidarity economy</li> <li>• Industrial and agricultural economy</li> <li>• Project analysis and evaluation</li> <li>• International trade</li> </ul>	DESS	M. Sc.	Ph. D.
<b>Research Unit</b>	• Action Research Chair in Agricultural Marketing ( <b>CRACPA</b> )			



## 2.1.4 Faculty School Management

Each of the seven ISTEAH schools is headed by a director who is the equivalent of a faculty dean. They are listed below:

- ❑ **Dr. Samuel Pierre**, P.Eng, Ph.D., Director of the School of Engineering;
- ❑ **Dr. Harold Previl**, MD, MSc, Director of the School of Medicine and Health Sciences;
- ❑ **Dr. Antony Boucard Jr**, PhD, Director of the School of Science;
- ❑ **Dr. Carlo Previl**, PhD, Director of the School of Agricultural, Food and Environmental Sciences;
- ❑ **Dr. Pierre Toussaint**, PhD, Director of the School of Education and Professional Development;
- ❑ **Dr. Kiria Despinos**, Ph.D., Director of the School of Legal Sciences;
- ❑ **Dr. Philippe Régnier**, Ph.D. Director of the Graduate School of Business and Entrepreneurship

## 2.1.5 Expert Panel Evaluation Report

After receiving four years of funding from Canada's International Development Research Centre (IDRC), an expert committee, at the request of ISTEAH management, reviewed the results of ISTEAH and provided a report on their understanding of the current situation. In addition to the documents provided by ISTEAH management, the committee held meetings with students, graduates, faculty members, and members of the management team. We reproduce here an excerpt from its report:

*"It is superfluous to go back at length on the extremely difficult context that Haiti has known during this period. It seems to us that, in a very fragile country, ISTEAH has continued its work with tenacity and efficiency. Its remote mode of operation has positioned it as a proactive university in the continuity of university services in Haiti in times of crisis.*

*We have chosen to present our comments around two axes: the achievements of ISTEAH in terms of teaching and research and its impact on its environment.*

### **ISTEAH, an innovative university with eloquent results**

*ISTEAH is an innovative model in several ways:*

Its technology-enabled distance learning model allows for graduate students to be trained without having to leave the country to pursue their education;

- ❑ *A quality faculty composed largely of volunteers, Haitians of the diaspora and professors from the North accredited in their respective universities as well as a few full-time Haitian professors;*
- ❑ *Graduate programs with a 15-credit general education propaedeutic;*
- ❑ *Graduate programs in scientific fields that were previously orphaned in a country where the needs are immense.*

*The quality of the programs is unquestionable, the professors are recognized in their fields and familiar with the levels of training at northern universities; they are available to advise students and meet their needs. Resource materials are available online and the university offers students psychological and financial counseling for those who are experiencing difficulties.*

*Finally, taking into account the extremely difficult circumstances that students face, the retention and graduation rates are noteworthy.*

*In terms of research, the centers created by ISTEAH promote the conduct of projects rooted in the national reality, while doctoral theses and master's theses enrich the country's scientific publication. In addition, the award of a research chair by UNESCO confirms the solid reputation of ISTEAH.*

*These findings allow us to conclude that the academic value of the project is undeniable and unprecedented in the country.*

### **ISTEAH in the Haitian university environment**

*The relevance of ISTEAH does not need to be demonstrated, the facts speak for themselves. The demand for quality training that allows students to be at an international level is very present, but the vast majority of Haitian universities have been struggling for decades to produce the competent graduates that the country badly needs. The exodus of Haitians to pursue higher education abroad often turns into a permanent departure, as the Haitian academic environment does not offer the stimulation expected by new graduates upon their return to the country.*

*For ISTEAH, keeping its graduates in the country represents an invaluable contribution to the social, democratic and economic development of Haiti. It also contributes to the development of a true Haitian scientific culture based on the desire to contribute to the advancement of the country. ISTEAH's collaboration with foreign universities speaks volumes in this regard. The latter welcome students for internships and give them an international experience. The same is true of the training of quality personnel who, in turn, spread this level of standards to the next generations and allow the sharing of the values of the university tradition: the disinterested search for knowledge, the sharing of ideas and knowledge in the service of the common good.*

*At the end of this work, which has allowed us to review ISTEAH's results and to attest to their excellence, we wish to thank all the people we met for the richness of their testimonies and their contribution to a better understanding of the remarkable work accomplished by ISTEAH, its management, faculty, staff and financial supporters. In less than ten years of existence, with ingenuity and dedication, ISTEAH confirms Cornelius' adage that "To the well-born, value does not wait for the number of years."*

## **2.2 PIGraN - City of Knowledge**

One of the biggest challenges facing many developing countries is to improve the quality of life and well-being of their populations while respecting the principles of sustainable development. Several aid programs have been implemented in these countries over the past decades, requiring huge human and financial investments. However, results are not always forthcoming. In the particular case of Haiti, aid has amounted to several billion dollars over the past 30 years, without having improved the daily lives of citizens and reduced poverty. To experiment with a new approach to this problem, the PIGraN project was designed to use innovative information and communication technologies, learning technologies, and energy technologies to design a prototype for sustainable development that will bring well-being to northern Haiti.

### **2.2.1 General presentation of the PIGraN project**

Progress in putting in place the mechanisms needed to support efforts to achieve the Sustainable Development Goals (SDGs) has been very uneven globally. Growing inequalities often lead to the exclusion of some citizens from the gains made by other countries in education, health and employment. These challenges highlight the need for good governance and strong institutions that

can help to formulate and implement that governance. It also highlights the need for reliable knowledge, analysis, and data in policy development and implementation. On this last point, research and academic institutions have an important role to play as sources of knowledge, federators and mediators among different actors in the development of public policies, the conduct of scientifically driven experiments and the generation of evidence. These institutions must also work to accelerate progress towards the SDGs. Rather than behaving like knowledge elites increasingly removed from their local context, research institutes and universities must use their credibility and independence to moderate, bridge, federate and reason by mobilizing the knowledge of multiple societal actors to make real progress towards the achievement of the SDGs. To do so, they will need to work together, pooling their expertise and knowledge and building capacity where it is currently limited, to help build transformative communities and work together to improve community well-being.

With these considerations in mind, the Institut des Sciences, des Technologies et des Études Avancées d'Haïti (ISTEAH) is a major player in the Pôle d'Innovation du Grand Nord (PIGrAN) project. An innovation cluster is a network of independent companies - small, medium or large - linked to higher education and research institutions, active in one or more sectors. It aims to stimulate innovation by encouraging intensive interaction, sharing of equipment, exchange of knowledge and know-how. It thus contributes effectively to technology transfer, networking and the dissemination of information between companies. An innovation cluster is characterized on the one hand by its technical skills and on the other hand by its ability to create a network of relevant partners at the local level and to find distribution relays at the national and international levels. It also provides solutions that meet the needs of small businesses and supports them in their development efforts through technological, organizational, environmental and social innovation.

An innovation hub builds local capacity by providing a platform for learning and collaboration and encouraging civic participation in land use planning. By identifying emerging needs, new opportunities, and new trends, the hub acts as a community incubator, fostering innovation by providing a place for citizens, organizations, and decision makers to meet, share, and learn together.

PIGrAN was conceived in 2015 by GRAHN with the goal of transforming the Great North of Haiti into a true innovation hub built around a true Knowledge City. The Milot City Council made available to the project a 30-hectare plot of land located in Génipailler, a rural area, third communal section of Milot. This city is considered the most touristic of Haiti, with the Citadelle Laferrière and the National Historical Park Citadelle Sans-Souci Ramiers (PNH-CSSR) which are historical monuments of great value.

According to a report by the National Institute for Heritage Protection (ISPAN, 2010), the PNH-CSSR was inscribed on the World Heritage List in 1982 on the proposal of the International Council on Monuments and Sites (ICOMOS), which perceives the Citadelle Laferrière as both a military work and a political manifesto. It is one of the best witnesses of military engineering at the beginning of the XIX<sup>e</sup> century. This report indicates that this heritage was circumscribed by Yves Renard's mission for the United Nations Educational, Scientific and Cultural Organization (UNESCO) in 1983 and, in the absence of any national legislation, it is Renard's proposals that constitute the spatial references for the Park to this day, i.e., an area of 25 km<sup>2</sup> including the PNH-CSSR itself and its peripheral zone.

The National Historical Park is located in the northern part of the Republic of Haiti, in the central zone of the northern massifs that extend to the Dominican Republic. It is bounded, to the north, by the access road to the Citadel up to the ravine of the Brisement; to the west by the slope of the Bonnet-à-l'Évêque massif up to the Grand-Gouffe; to the east, it cuts through the valley of the Dondon between the Godignant and Bellevue hills and, to the south, it runs along the crests of

the Corneille, Ginette and Jérôme hills. The PNH-CSSR thus covers four communes in the North Department: Milot, Dondon, Plaine-du-Nord and Grande-Rivière-du-Nord. The National Historical Park has three dominant elements: one of the hotspots of the country's biodiversity, a place of memory, a space for recreation and sharing of Haitian culture. It is in this historical and geographical framework that the Cité du savoir is inserted as the heart of this Innovation Pole.

Conceptually, as shown in Figure 2, PIGraN is composed of 4 concentric circles, the first of which represents the City of Knowledge, with an area of 30 hectares. The City of Knowledge is composed of 4 sectors: a university sector, a school sector, a service sector and an agricultural sector. Figure 3 shows the layout of the Cité du savoir. The university sector is the main headquarters of ISTEAH.

### **2.2.2 Evolution of the Cité du savoir**

During the 3 years covered by this report, the construction and development of the City of Knowledge has progressed significantly, despite the difficult socio-political situation the country has experienced. Figure 4 shows a partial view of the project as of January 2021.



**Figure 2.** The PIGrAN concept



**Figure 3.** City of Knowledge layout diagram





**Figure 4.** Partial view of the Cité du savoir during January 2021

### The Paul-Gérin-Lajoie Early Childhood Centre

The Centre de la petite enfance Paul-Gérin-Lajoie (CPE PGL) is completely built and has reached its cruising speed. It is open from Monday to Friday, from 8:00 a.m. to 4:00 p.m. A hot meal is offered at noon to all children attending. In September 2021, a staff of 6 educators will be supervising the children. The CPE currently employs a total of 11 people, including the director. Tables 8 and 9 present the number of children who attended the CPE in 2020-2021 and in 2021-2022.

**Table 8.** Distribution of children attending the CPE in 2020-2021

GENDER	SMALL SECTION 3 YEARS	MIDDLE SECTION 4 YEARS OLD	LARGE SECTION 5 YEARS	TOTAL
Girl	23	13	11	47
Boy	21	17	14	52
Total	44	30	25	99

**Table 9.** Distribution of children attending the CPE in 2021-2022

GENDER	SMALL SECTION 3 YEARS	MIDDLE SECTION 4 YEARS OLD	LARGE SECTION 5 YEARS	TOTAL
Girl	23	21	13	57
Boy	20	23	15	58
Total	43	44	28	115

Based in Montreal, the Quebec-Haiti Foundation for Quality Universal Education (QHASUQ) is the trustee that receives donations for the CPE. The CPE Sponsorship Fund is the organization responsible for collecting and allocating funds to the CPE. It maintains a network of sponsors and one-time donors who are solicited regularly and who financially support the actions of the CPE. To fulfill its mission, the Sponsorship Fund organizes various promotional and fundraising activities, develops promotional tools (flyers, digital documents presenting a summary of the project, newsletter, website, updated information on the project website, etc.). Figures 5 and 6 illustrate the life of the Cité du savoir's PGL childcare centre.



**Figure 5.** Professor of Clinical Psychology of Quebec at Cité du savoir

### **Anne-Nelly-Saint-Preux Basic School**

This elementary school will consist of 9 classes ranging from grades 1 to 6 and grades 7 to 9 of secondary school. It is built in three phases, according to the plan in Figure 7.

As shown in Figures 8 and 9, Phase 1, which includes 8 classrooms, is completed and has been operational since September 2020. In September 2021, the Basic School employs a total of 9 people, including the director. It incorporates the *Haitian-Canadian Engineers and Scientists Computer Laboratory* shown in Figure 10 and the *Farah-Saint-Preux Science Laboratory* in Figures 11 and 12. According to Table 10, nearly 100 students will attend in September 2021.





**Figure 6.** Social gathering at the PGL daycare center



**Figure 7.** Three-dimensional plan of the Anne-Nelly-Saint-Preux Basic School





**Figure 8.** Completion of Phase 1 of the Basic School



**Figure 9.** Students in Phase 1 of the Basic School



**Figure 10.** Haitian-Canadian engineers and scientists computer lab



**Figure 11.** Farah-Saint-Preux Science Laboratory in installation



**Figure 12.** Farah-Saint-Preux Science Lab installed



**Table 10.** Distribution of Basic School Students in 2021-2022

GENDER	1E YEAR	2E YEAR	3E YEAR	4E YEAR	TOTAL
Girl	12	18	11	11	52
Boy	13	12	14	07	46
Total	25	30	25	18	98

### **Elvire-Joachim Poultry Farm**

This farm was built in 2019 in the Agriculture sector of the City of Knowledge. It will be used as part of the operations of the PIGraN Agro-Industries company that will begin operations in January 2023. Figure 13 shows a view of it.



**Figure 13.** A view of the Elvire-Joachim Poultry Farm

### **The City of Knowledge Engineering Office (CKEO)**

BICS is a construction firm that GRAHN created in the City of Knowledge and has been performing all work there since 2020. It acts as a general contractor using subcontractors who execute mandates under its control. Its staff consists of 3 engineers, 3 foremen and 2 administrators. One of the engineers serves as the BICS General Manager and works closely with the GRAHN ATERI Theme Committee. BICS has already constructed the building it currently occupies, which is shown in Figures 14 through 19.

### A first custody residence

In 2020, BICS built the first of 3 on-call residences for dedicated City of Knowledge security personnel. Figures 20 through 22 show some views of these.



**Figure 14** External view of the BICS



**Figure 15** BICS main facade



**Figure 16** View of the rear of the BICS



**Figure 17** BICS Reception and Meeting Room





**Figure 18** BICS Engineering Office



**Figure 19** BICS Meeting Space



**Figure 20** Views of the main facade of the guardhouse





**Figure 21** Right side view and rear view



**Figure 22** Left side view

In 2021, BICS built the **first** of three bungalows at the entrance to the Cité du savoir. Figures 23 to 26 show some of the views.



**Figure 23** Right side face of the bungalow



**Figure 24.** Left side face of the bungalow



**Figure 25.** Front face of the bungalow



**Figure 26.** Rear face of the bungalow

### **Secondary entrance to the Cité du savoir**

The Cité du savoir will have 2 entrances: a main entrance and a secondary entrance. In 2021, we proceeded with the development of the secondary entrance that gives access to the first buildings built or under construction. This work will continue to widen and redevelop the entrance road leading to it. Figures 27 to 31 show some of the views.





**Figure 27.** Barrier and guardhouse in yellow



**Figure 28.** View of the road to be widened and redesigned



**Figure 29.** View of the entrance sign



**Figure 30.** View of the gate and entrance sign



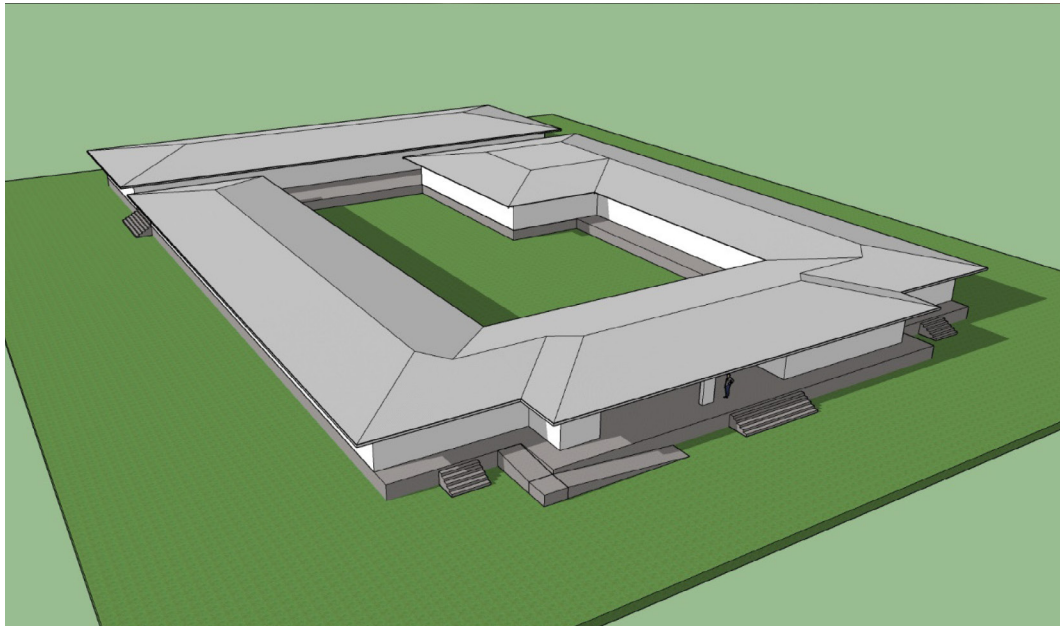


**Figure 31.** Night view of the entrance sign

### **The Graduate School of Business and Entrepreneurship**

This college is one of the 7 schools of ISTEAH. It will be built in 3 phases. The first phase is financed in part by the SOGEBANK Foundation, one of the largest commercial banks in Haiti, whose name it will bear. Its construction started in 2020. This phase includes 6 classrooms, 6 administrative offices and a cafeteria. Phase 2 will include training rooms, administrative offices, a business services center and an advanced computer lab. Phase 3 will include a *FabLab* and business incubator.

Figure 32 shows the 3-dimensional sketch of the plan for the Graduate School of Business and Entrepreneurship. Figures 33 and 34 show the status of the work for the current reporting period.



**Figure 32.** Outline of the Graduate School of Business and Entrepreneurship



**Figure 33.** Status of the work - Left side and front entrance



**Figure 34.** Status of the work - Right side and entrance to the rooms

### **The AMHE-GRAHN Community Health Center**

This is a joint project of GRAHN with the Association Médicale Haïtienne à l'Étranger (AMHE), branches of Canada and the United States. The Community Health Center also includes 3 phases. Construction of Phase 1 began in 2019. Figure 35 shows the plan of the main facade, while Figure 36 shows the interior courtyard that will serve as a patient reception area. Figures 37 and 38 show the construction status of the Health Center.





**Figure 35.** Plan of the main façade of the Health Center



**Figure 36.** Plan of the Health Center's interior courtyard





**Figure 37.** Status of the Health Center - Main façade



**Figure 38.** Status of the Health Center - Interior Courtyard

### 2.2.3 The Cité du savoir's entrepreneurial activities

Considering education, health and the economy as the three pillars of development, the PIGraN - City of Knowledge project places special emphasis on entrepreneurship as a means of multiplying job creation opportunities not only in the Far North, but throughout the country. This is one of the missions of ISTEAH's Graduate School of Business and Entrepreneurship.

Since 2019, GRAHN has created several companies, all of which are, to varying degrees, in the incubation stage. We can mention:

- ▣ PIGraN Incubator-Accelerator;
- ▣ City of Knowledge Engineering Office (CKEO);
- ▣ PIGraN Blòk;
- ▣ PIGraN DIò;
- ▣ PIGraN CSE;
- ▣ PIGraN Agro-Industries.

**PIGraN Incubator-Accelerator** (<http://www.pigran.org/incubateur/>) is a non-profit organization that supports new and emerging entrepreneurs in the launch and growth of their business mainly in the Grand Nord of Haiti (Departments of the North, North-East, North-West and Artibonite), by offering them low-cost office space, consulting services, professional and technical support, financing assistance, training, etc. Its objective is to support local entrepreneurship by encouraging the start-up of businesses that create jobs in the region. Special attention is given to the technological and environmental sectors.

- **PIGraN Incubator-accelerator** offers a support system that allows to validate an idea, to elaborate step by step the project by taking into account all the essential dimensions (marketing, finances, etc.),
- Produce a relevant business plan that allows you to credibly and convincingly solicit stakeholders (partners, financiers, etc.).

The **Bureau d'ingénierie de la Cité du savoir (BICS)** (<http://www.pigran.org/bics/>) is an engineering firm founded in 2020 to construct the buildings and structures of the Cité du savoir. As a general contractor, BICS also provides engineering and project management services to organizations, companies and individuals in the Grand Nord area of Haiti (North, North-East, North-West and Artibonite departments).

**PIGraN Blòk** (<http://www.pigran.org/blok/>) is a company specialized in the production of better, cheaper and more aesthetic prefabricated concrete elements for masonry in the Far North. This company promotes innovation by producing:

- new shapes and variations of decorative elements and paving glues;
- decorative elements of various surfaces.

**PIGraN Dlo** is a drinking water and juice production and marketing company operating in the City of Knowledge. The very first purpose of this organization will be to offer better quality drinking water to the inhabitants of the community of Génipailler and the surrounding areas. Eventually, PIGraN Dlo will cover the entire territory of the municipality of Milot and even the entire department of the North.

**PIGRAN CSE** (<https://www.pigran.org/cse/>) is an international high value-added services firm with a presence in several countries, particularly in the Caribbean and North America. It has a network of highly competent professionals in various fields, trained in the best universities in the world and with many years of experience.

PIGraN CSE has global expertise in telecommuting and outsourcing, with the ability to mobilize human resources on an international scale to meet the needs of its clients. Our services are customized to meet the needs of our clients, whose satisfaction is our priority. Local development is also a priority for PIGraN CSE, through the transfer of know-how to local communities within the framework of the mandates entrusted to it.

## 2.2.4 Governance of the Cité du savoir

In 2020, we formed the Cité du savoir's executive committee. The main role of this committee is to ensure the proper functioning of the Cité du savoir, particularly in its daily operations and in its relations with the community, including local authorities. It is composed of about ten members chosen from among the sixty or so people who work there full time. Its Executive Director is Ms. Magalie Félix. The president and the senior vice-president of GRAHN-World sit as observers.

On a regular basis, the Executive Committee meets every two months, for a minimum of six meetings per year. Other meetings may be added as needed. As a guide, topics discussed at these meetings include, but are not limited to:

- ▣ planning quarterly meetings with the community;
- ▣ Facilitation of a Community Education Program (CEP);
- ▣ Maintaining relations with local authorities (CASEC, Town Hall, etc.);
- ▣ Follow-up of the work in the Cité du savoir:
  - ▣ regular building maintenance,
  - ▣ landscaping of the site and maintenance of the plants on the site,
  - ▣ maintenance of the fence,
  - ▣ protection of the site from unauthorized animals,
  - ▣ management of goods storage space;
- ▣ hiring support staff;
- ▣ maintaining the safety and security of the premises;
- ▣ planning of events to be held in the City of Knowledge:
  - ▣ collation of degrees at ISTEAH,
  - ▣ graduation of children from the Early Childhood Centre, the Basic School and the Vocational School, etc.).

The Executive Committee attaches great importance to harmony and good relations with the community as a whole, whose development and well-being are the main reason for the existence of Cité du savoir. This is the reason why the Community Relations Officer, a full-time employee of La Cité du savoir, sits on the Executive Committee.

## 2.3 Haiti Perspectives magazine

For 10 years now, *Haiti Perspectives* has been offering its readers, eager for sharp analysis and unique perspectives on the state and future of Haiti, thematic issues of the highest quality. Ten years already, without interruption, with 7 volumes of 4 issues each. For two years now, a new section has been created alongside the thematic section of the journal to offer ISTEAH's student researchers a vehicle to get their first taste of the world of scientific publication before moving on to more specialized journals. Thus, the articles submitted to the "Dissertations and Theses" section are reviewed by a committee of experts with the same rigor as any scientific article.

The global pandemic that we have experienced over the past 3 years has somewhat slowed down the pace of publications. After this imposed pause, 2023 will mark the return of the magazine with thematic sections that will always deal with subjects of capital importance for the development of Haiti.

In addition, with printing costs skyrocketing, this new year will also mark a change in the mode of distribution of the journal, which will now be strictly digital. Figure 39 shows a sample of publications from recent years.



## 2.4 GRAHN-World Press

For 5 years now, GRAHN has created a publishing house whose mission is to nourish the permanent reflection of GRAHN.

Les Presses internationales GRAHN-Monde (PiGM) has taken over the production of the journal *Haiti Perspectives* and literary or academic works by Haitian authors. The last 3 years have been very rich in publishing unique works. In addition to the various issues of the journal, 7 books, ranging from mathematics books in Creole to a law book on environmental management in Haiti, have been published by Haitian authors in Canada, the United States, and Haiti. Figure 40 presents a sample of the books published in recent years.



**Figure 39.** A sample of publications from recent years



**Figure 40.** A sample of the works produced in recent years

PiGM has published 2 volumes of university-level mathematics in Creole by Professor Alfred Noel (2019, 2020), a book on the *great ills of our societies* by Max Dorismond (2020), a book by Lionel Carmant (2021) on French spelling (currently used in French courses at ISTEAH) a book by Jacques Casimir demystifying Haitian history, myths and legends (2020) and, in the midst of the pandemic, a long-awaited law book - the first of its kind - by Maismy-Mary Fleurant (2022), an associate professor at ISTEAH. This book focuses on the Haitian legal framework for environmental management and protection.

## **3. BRANCH ACTIVITIES**

This section summarizes the activities that were carried out during the 2019-2021 period by the 5 branches of the organization, namely GRAHN-Canada, GRAHN-USA, GRAHN-France, GRAHN-Haiti and GRAHN-Switzerland.

### **3.1 GRAHN-Canada**

The activities of GRAHN-Canada are closely linked to those of GRAHN-World. For the past three years, the main activity that has kept many GRAHN-Canada members busy has been the organization of the annual GRAHN-World brunch. The organizing committee has faced tremendous challenges to continue to offer members and supporters around the world an excellent event for an update on GRAHN projects. In addition, with all the construction underway on the PIGraN project, GRAHN-Canada coordinated a continuous supply of construction materials to our collaborators at the City of Knowledge site, ensuring the progress of the work. In addition, GRAHN-Canada has been involved in the search for funding for GRAHN projects by actively participating in meetings with some donors.

### **3.2 GRAHN-United States**

GRAHN-USA made a change in leadership in the fall of 2021: its first-ever president, Professor Ludovic Comeau Jr, resigned and Dr. Reynald Altéma, then vice president, replaced him.

In October 2021, the branch held a videoconference on the reconstruction of the Deep South disaster area (it had faced a hurricane and then an earthquake, back to back) before an audience of 250 people. Several organizations specializing in the construction of low-cost earthquake-resistant buildings were present. They spoke of their expertise and experience in this area, and their willingness to participate in any effort to address the situation. Unfortunately, the authorities in the country have so far not implemented any reconstruction program.

In addition, GRAHN-USA provided financial support to Genipailler to train masonry and painting workers using a gender-neutral approach. The program, which began in the fall of 2021, developed skills in several construction trades, including masonry.

The branch also participated in a video sponsorship project to train farmers in simple bio-agriculture methods. It did so in collaboration with Vox S.A., a Haitian-based company that works to transform fallow fields into fertile land for cultivation. Unfortunately, the project fell victim to the insecurity that still plagues the country and this delayed the production of videos.

Finally, the branch covered the cost of shipping \$10,000 worth of office furniture donated by one of its members to the site. The furniture is destined for the schools being built in the City of Knowledge.



### 3.3 GRAHN-France

The socio-economic and political situation in Haiti and the situation related to the pandemic had the effect of putting the usual functioning of GRAHN-France on hold. For example, the branch was unable to hold regular meetings. This deprived it of contacts with its members, supporters and partner associations, thus drying up its sources of income, slowing down its recruitment initiatives and putting a temporary halt to its activities in France. A large majority of Franco-Haitian associations are also suffering from the effects of the economic situation.

An adaptation of the operating mode had therefore become necessary. To survive and then grow, the branch decided to change its governance and opt for a more collaborative management. The possible loss of efficiency and responsiveness could have been largely compensated for by a greater involvement in decision-making and a more intense commitment to the implementation of actions. The implementation of the new governance will necessarily require a renewal and expansion of the management team. A great project for the coming year!

In order to compensate for the lack of resources, both human and material, during the past period, GRAHN-France has intensified its collaboration within GRAHN-World. This was done in the framework of ISTEAH and PIGraN's economic projects or in more fun initiatives such as the organization of the annual Brunch and the Science Olympics for young people. The branch also contributed to the organization of the launch of the UNESCO Chair in Women and Science for Development at ISTEAH. Its participation in these different projects has taken the form of providing technological support.

During this period, GRAHN-France has established a more direct collaboration with other GRAHN branches. It regularly participates in meetings of the branch presidents. This initiative of GRAHN-USA has laid the foundation for future common achievements. During this period, a rapprochement with GRAHN-Switzerland took place. Inspired by the concept of the thematic Sundays of GRAHN-Switzerland, GRAHN-France considered organizing, perhaps jointly, a series of conferences on historical themes or scientific popularizations, leaving the current issues to GRAHN-Switzerland.

During this gloomy period, a few milestones have been reached that allow us to be optimistic for the future. What are the prospects? In the field of education, GRAHN-France has created a mobile environment (hardware and software) that allows for quality education in rural areas that do not have adequate infrastructure. A pilot project will be launched in October 2022, which will allow to refine the concept and to deploy it more widely at the beginning of the school year in September 2023. For optimal use of this tool, qualified teaching staff is needed. To achieve this goal, a short training course has been developed and offered to these personnel (Early Childhood Centre and Basic School). It will also be offered in September 2022 to a partner school. In the area of health, a health center management system is being developed for the needs of the project. There is no doubt that this system could be useful for other health institutions. In general, the management systems developed under PIGraN will be useful to small and medium-sized enterprises in the region.

During these last three years, GRAHN-France has kept the boat afloat and prepared the future. Let's hope that the sea will be less rough soon and that we will be able to resume our journey towards this new Haiti that we want to help build.

### 3.4 GRAHN-Haiti

In 2019, GRAHN-Haiti experienced several changes in its organization. The actual restructuring of the Haitian chapter's Board of Directors (BoD) was initiated in 2020. The executive committee of GRAHN-Haiti was modified to include the Board of GRAHN-Port-au-Prince and the presidents of other chapters. As a result, Bénédictine Paul was named president of GRAHN-Haiti.

In terms of accomplishments for the 2019-2021 period, these include:

- ▣ the organization of a big event on Saturday, April 17, 2021, online, on the achievements of the GRAHN despite the crises;
- ▣ Phase 1 of the Fundamental School Building (completion);
- ▣ The animation of the chapters with the coordination of GRAHN-Port-au-Prince and the creation of a WhatsApp group composed of chapter presidents in Haiti;
- ▣ Participation in all GRAHN-World events (e.g. annual brunches);
- ▣ Participation and speaking at the patriotic event on January 29, 2019 at the Ciné Triomphe;
- ▣ the commemoration of the 10th anniversary of GRAHN on January 25, 2020.

### 3.5 GRAHN-Switzerland

The GRAHN-Switzerland branch was founded in 2016 and officially joined GRAHN in 2017. After achieving its first goal of consolidating organizational and legal structures, it has continuously pursued 3 other goals:

- ▣ to raise awareness of the Haitian cause;
- ▣ support the GRAHN PIGraN project;
- ▣ to strengthen the "GRAHN-Switzerland" brand.

As for the objective of raising awareness of the Haitian cause, it was necessary because the image of Haiti propagated through the media is not very good. Therefore, the branch did not set itself the task of restoring Haiti's image, but rather of presenting the image of this country in its complexity and, above all, in its globality. It presents the facts in an objective manner while explaining the historical and sociological context. Its goal is to rally as many people as possible to the Haitian cause, especially young people of Haitian origin of the second or third generation in Switzerland. She has recruited new members from people who have just been won over to the Haitian cause.

To support the PIGraN project, GRAHN-Switzerland continues to raise funds for the construction of the City of Knowledge High School. The plan of the building has been completed. To raise funds, the branch is intensifying the number of activities (e.g. "running for the cause", conferences, film screenings, recreational evenings).

In order to reinforce the brand "GRAHN-Switzerland", events have been organized in person or by videoconference at a rate of one conference per month with mostly experts on topics directly related to Haiti. The goal is to open a space for debate on sometimes thorny issues and to educate and inform people sympathetic to the Haitian cause. The excellence of the debates organized by GRAHN-Switzerland has not only attracted new members, but above all, has positioned the branch as a reliable source of information within the GRAHN family.



## 4. THEMATIC COMMITTEES

This section presents the activities of GRAHN's five thematic committees, namely:

- ▣ Land use planning, environment, risks and infrastructures (ATERI);
- ▣ Economic and Social Development (ESD);
- ▣ Education and culture;
- ▣ State, Governance and Justice (SGJ);
- ▣ Public Health.

### 4.1 ATERI

During the reporting period, the ATERI committee contributed to the preparation of plans and specifications for the PIGraN - City of Knowledge construction, to the formation of the City of Knowledge Engineering Office (CKEO) to ensure better oversight and execution of the work, and to the creation of partnerships for very important projects such as those with the *Renouv-Lab* team and *Food For The Poor*.

The committee participated in the development of several deliverables and assignments, including:

- ▣ The City of Knowledge Development Plan Review;
- ▣ Development with BICS of a maintenance program for the Centre de la petite enfance (CPE) Paul-Gérin-Lajoie (a maintenance and sustainability program will be developed for all buildings constructed on the Cité du savoir site);
- ▣ Participation in the recruitment of site engineers and the creation of the BICS in order to provide the Cité du savoir with the capacity to carry out the following works
  - two custodial residences, a student residence and the BICS building,
  - Phase 1 of the Fundamental School building (completion),
  - the Graduate School of Business and Entrepreneurship building (completion),
  - Phase 1 of the Health Center (finalization),
  - the drinking water supply system of the Basic School;
- ▣ Participation in the development of technical design documents for the following structures or projects:
  - Phase 1 of the Graduate School of Business and Entrepreneurship (GSBE),
  - phase 1 of the AMHE-GRAHN Community Health Center,
  - support for the development of the concept of the Vocational School under the direction of GRAHN-USA,

- support for the development of the City of Knowledge Library concept under the direction of GRAHN-France,
- Support for the installation of the fence on the Cité du savoir site (approximately 3 km) and an update of the survey plan of the entire site,
- project to develop the entrance to the Cité du savoir (300 meters of roads),
- Participation in the development of the concept for the implementation of a 10 MW photovoltaic system (in partnership with the *Renouv-Lab* team),
- Participation in the elaboration of the qualification file of ISTEAH in the PHARES program (Haitian program of access to solar energy for rural communities), that is to say the PIGraN Énéji project (with the contribution of the *Renouv-Lab* expert team),
- Participated in the development of the design document for the City of Knowledge village in conjunction with Food For the Poor,
- participation in the construction of on-call residences on the Cité du savoir site,
- Participation in the development of the design document for the *Yvon Mouscardy Agora* building,
- Consideration of the establishment of a materials quality control laboratory in the Cité du savoir,
- reflection on the process of selection and purchase of quality materials both in Haiti and abroad;
- Technical support for the realization of several buildings of the Cité du savoir:
  - Phase 1 of the Basic School,
  - Phase 1 of the Community Health Centre,
  - Construction of a poultry farm on the Cité du savoir site;
- Updating our Construction Charter.

The committee has held approximately 20 general meetings and over 20 special meetings with over 10,000 volunteer hours. The committee is composed of more than 30 members of various disciplinary orientations based in Haiti, the Dominican Republic, the United States, Canada and France: administrators, architects and urban planners, human and professional development advisors, contractors, engineers and professors.

## 4.2 Economic and social development

During the 2019-2021 period, the Economic and Social Development Committee (ESDC) had the obligation to adapt and modify its approach in order to meet the new expectations of GRAHN. It had become necessary to provide adequate support in the realization of certain projects presented in GRAHN's book, *Building a New Haiti* (2010). Such work required various expertises in the preparation of multiple projects, hence the need for competent human resources for the development of business plans, the search for funding and the management of these projects. During this period, which was greatly affected by COVID-19, the work of the CDES and its mode of operation took on other forms. Indeed, the CDES participated in the design of the Cité du savoir village and played

an active role in the start-up and management of the businesses created there. However, the most important files that have occupied the CDES remain the Société de développement international PIGraN (SDI PIGraN) and the Fonds d'investissement en économie sociale et solidaire (FIESS).

### **SDI PIGraN**

SDI PIGraN is a federally chartered, non-profit corporation incorporated in Canada in March 2016. Managed by a 13-member board of directors, SDI PIGraN's mission is to protect and promote the economic interests of Haiti's Far North at the international level with a view to sustainable development. It aims to be the economic lens of the region by ensuring an international strategic watch in order to attract foreign investments for the creation of companies with a strong socio-economic impact. To this end, it seeks to put in place the conditions necessary to accompany foreign investors in the perimeter of PIGraN.

Objectives include:

- ▣ the creation of companies with a high potential for job creation;
- ▣ the valorisation of PIGraN's products and services to promote their export;
- ▣ support for entrepreneurial innovation to attract foreign investment within the PIGraN perimeter.

### **FIESS**

The Social and Solidarity Economy Investment Fund (FIESS) is a GRAHN project launched in the North in late 2015. It is being developed in the Acul-du-Nord district (Génipailler-Milot, Plaine-du-Nord, Acul-du-Nord) to which the Cap-Haitien area is added. It is a limited territory, located in the immediate environment of the Pôle d'innovation du Grand Nord. The clientele served includes:

- ▣ all promoters with feasible projects who are willing to undergo training in business management;
- ▣ ISTEAH and Cité du savoir employees.

This project was set up to strengthen sustainable informal initiatives through an integrated program offering financial and technical assistance and training. It has gradually expanded. Indeed, as of December 31, 2021, the files submitted to FIESS were distributed as follows

- ▣ 148 applications for financial assistance and support;
- ▣ 124 business or employee project files accepted;
- ▣ 4 files refused.

To date, FIESS has supported the creation of 97 full-time jobs and at least 100 part-time jobs. Assisted businesses have created at least one full-time job for owners.

The types of businesses created are as follows:

- ▣ 64 commercial enterprises (63.36%);
- ▣ 21 manufacturing companies (20.79%);
- ▣ 12 service companies (11.88%);
- ▣ 4 projects refused (3.96%).

There are also 27 employee projects submitted and funded, 3 of which are for-profit.

In terms of business ownership, 78 women and 44 men, or 64% and 36% respectively, are beneficiaries of FIESS financial and technical assistance and run a business.

Table 11 presents the geographical distribution of the entrepreneurs assisted by FIESS as well as the amounts granted. Table 12 presents the quantitative balance sheet as of December 31, 2021 of FIESS. The approximate return is 7.25% since 2020.

All in all, FIESS has made it possible, in recent years, to increase economic activity in the various localities it serves and to give hope to many families. Thanks to the technical and financial assistance granted to promoters, living conditions in these communities have improved. The same is true for the employees of the various GRAHN entities who benefit from this fund. FIESS thus contributes to the development of the Génipailler-Milot region. It is now a question of extending it to other districts of the Grand Nord.

**Table 11.** Geographical distribution of entrepreneurs assisted by FIESS

Nº	LOCATION	PROFILE	AMOUNT AWARDED (IN GOURDS)
1	North Acul	Developer	932 759
2	Cap-Haitian	Developer	1 780 000
3	Carrefour Pères	Developer	805 000
4	Lory	Developer	635 000
5	Other	Developer	212 000
6	Port-au-Prince	ISTEAH employees	5 511 052
	<b>Total</b>		<b>9 875 811</b>

**Table 12.** Quantitative balance as of December 31, 2021

Nº	ALLOCATION	AMOUNT (IN GOURDS)	AMOUNT (IN US \$)
1	Financing granted to companies	9 876 811	
2	Women entrepreneurs	5 809 528	
3	Male entrepreneurs	4 067 283	
4	Reimbursement of promoters to FIESS	8 612 779	
5	FIESS Accounts Receivable (Business Loan Balances)	1 930 242	
6	Funding for employee projects	6 242 052	
7	Turnover of companies assisted by FIESS	57 331 100	
8	Original FIESS investment envelope (August 2017)		115 242
9	Funding provided to GRAHN entities since 2020		60 000

## 4.4 Education and culture

During the period covered by this report, the committee was mainly active with the Centre de la petite enfance Paul-Gérin-Lajoie and the École fondamentale Anne-Nelly-Saint-Preux. It also carried out actions in the field of culture.

### 4.4.1 Education

In recent years, the Early Childhood Center has admitted an average of 35 new 3- and 4-year-olds annually and the Basic School welcomes a new class each year. After organizing PIGraN 2018, the first international symposium in early childhood education with the participation of UNICEF, which was attended by more than 300 people (workshops, seminars and conferences, by videoconferences with people from Quebec), we are thinking of organizing the 2<sup>e</sup> international symposium in early childhood education as soon as the situation allows it.

The children who attended the CPE as early as 2016 were old enough to enter kindergarten and first grade of the Basic School in September 2018. This meant setting the stage and welcoming the 47 children, 25 in kindergarten and 22 in the first year of Basic School. The education system committee became the program writing committee with the goal of providing a model Basic School for the greater North Region. The languages of instruction are Creole and French.

The **mission** of the Fundamental School is to train young people up to grade 9<sup>e</sup> with a very specific concern, a program that emphasizes education in citizenship, science and technology, health and sports, while respecting the curriculum imposed by the Ministry of Education and Professional Training (MENFP). The educational project of the École fondamentale Anne-Nelly-Saint-Preux de Génipailler aims to offer all its students a stimulating educational environment and conditions conducive to the development of knowledge and skills that will ensure their educational success in terms of instruction, socialization and qualification. It is based on a major principle: to intensify the collaboration between the school, the family and the community. The main objective of the Basic School is to produce disciplined, creative, enterprising students with integrity, which the country and local communities need to develop.

Construction of Phase 1 of the school began in April 2018 and was completed in November 2021. As a result, the school became **the Anne-Nelly-Saint-Preux Fundamental School**. It has 8 classrooms, including a science lab and a Computer Lab incorporating a Resource Center function. To complete Phase 2, fundraising is underway.

In order to ensure the sustainability of funding for the Fundamental School, two businesses have been created in the City of Knowledge, **PIGraN Blok** and **PIGraN Dlo**. These businesses aim to create jobs for the people of Genipailler and the region, but also to contribute to the funding of the school. Until these businesses become profitable, we have established a Fundamental School **Support Fund** (FSF) that raises money to support the school's activities, although most of the funding is currently provided by ISTEAH for which this school acts as a laboratory. The Support Fund is managed by a five-member board.

#### 4.4.2 Culture

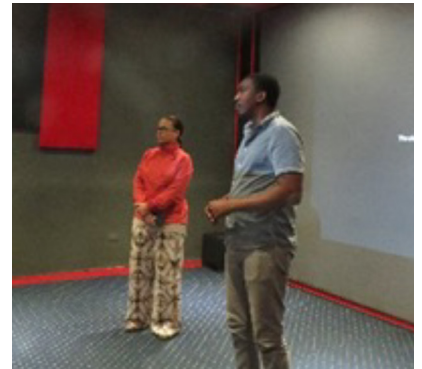
The Haiti - Quebec - Caribbean Film Festival (FFHQC) 2019 took place from August 29 to September 3, 2019. The Festival began with a welcome and exchange lunch between the population of Génipailler and the representatives of GRAHN and FFHQC. Then, each screening ended with a discussion period between the presenter and the audience. More than 300 students enjoyed 13 short and feature films by Paul Tom, Miryam Charles, Clarissa Rebouças/Julie Bernier, Frantz Voltaire, Pierre Greco, Ariane Louis-Seize, Julie Prieur, Christine Chevarie-Lessard and Clarissa Rebouças. These films, which were intended for students of all ages, were carefully chosen for the quality of their message and their production. Among the titles, let us mention: *Alice au pays des gros nez* (Nicole Giguère 2003), *Ayiti Toma, au pays des vivants* (Joseph Hillel 2013), *Bagages* (Paul Tom 2017), *Émergence* (Clarissa Rebouças and Julie Bernier 2018), *Les chemins de la mémoire* (Frantz Voltaire 2002), *Le coq de St-Victor* (Pierre Greco 2014), *Les petites vagues* (Ariane Louis-Seize 2018), *Porter notre dignité* (Clarissa Rebouças 2017), and *Vol tristesse* (Miryam Charles 2015). These films have been screened at the Cité du savoir (Génipailler), Cinema Versailles (Cap-Haitian) and Rev Cinema (Pétion-Ville).

The objectives were:

- to present independent films from Quebec, the Caribbean and Haiti;
- to offer young Haitians an invitation to reflection and communication;
- to highlight the importance of culture, history, intercultural exchange, creativity, and the expression of one's own experience as the foundation of one's personality in the educational project;
- to honor a director who can serve as an example to the youth.

The project was able to count on the participation of GRAHN-Monde for the coordination, of Ciné Tapis Rouge for the research of a large part of the Quebec films, of CIDIHCA for the selection of the Haitian and Caribbean films, of GRAHN-Haïti as the Haitian partner for the departments of the North and the West, and of Rev Cinéma as a partner and distributor of the films in Port-au-Prince. We were also honored to welcome the Quebec writer and director of the film *Bagages*, Mélissa Lefebvre and Paul Tom, who accompanied us to Haiti and actively participated in the project. The foundations of an exchange between the Quebec and Haitian film communities were laid. The directors of the film *Bagages* were invited to participate in the Forum de la Jeunesse active (2019), but this project could not be held due to the situation in the country. Figure 41 shows some images from the Haiti - Quebec - Caribbean Film Festival.









**Figure 41.** Some images from the Haiti - Quebec - Caribbean Film Festival

### 4.3 State, governance and justice

The Covid-19 pandemic, which lasted for about two years, resulted in a slowdown, or even a halt, of various activities around the world. In Haiti, this difficult reality was exacerbated by a very unstable socio-political context. Notwithstanding this difficult context, the State, Governance and Justice Committee (EGJ) was able to participate in certain activities such as

- ▣ ISTEAH's Women in Science course;
- ▣ the creation of the UNESCO Chair in Women and Science for Development at ISTEAH;
- ▣ 2019 ACFAS Colloquium;
- ▣ the International Conference on Girls' Education.

#### Women in Science Course

Kerline Joseph, the EGJ committee chair, is one of the course holders for the *Women in Science* course she developed in 2015 as an associate professor at ISTEAH. This course, offered to ISTEAH students for the first time in 2017, has the main objective of bringing together scientists, researchers and scholars to exchange and share their experiences and research results on different aspects of women in science, engineering and technology, while raising awareness of the importance of women's full and complete participation in the development of the country.

(<https://www.isteah.edu.ht/index.php/rss/203-ist6050>)

## UNESCO Chair in Women and Science for Development

What was considered utopian for about ten years has become reality with the launch of the UNESCO Chair in Women and Science for Development in Haiti on June 17, 2021 ([https://www.lenational.org/post\\_article.php?pol=288](https://www.lenational.org/post_article.php?pol=288)). On this occasion, Kerline Joseph presented certificates of recognition signed jointly by UNESCO and ISTEAH to the members of the steering committee of the SAGA-UNESCO-ISTEAH project, in recognition of their efforts, their abnegation, their contribution that paved the way for the realization of this Chair. The holder of the Chair, Professor Rose-Michelle Smith, recalled the importance of a Women and Science Chair for the *empowerment* of girls and women in Haiti.

## 2019 ACFAS Conference

Université du Québec en Outaouais (UQO)

Gender, feminisms and development: a trilogy under construction

Kerline Joseph (ISTEAH), [Caroline Andrew](#) (University of Ottawa)

Kerline Joseph, associate professor at ISTEAH and head of the EGJ committee, made a presentation at the ACFAS Colloquium with Dr. Caroline Andrew, professor at the University of Ottawa and member of the UNESCO Chair in Women and Science for Development. This presentation, entitled “Development, women’s empowerment at the heart of the initiatives of the Groupe de réflexion et d’action pour une Haïti nouvelle (GRAHN)”, was greatly appreciated by the audience and gave rise to several interesting and constructive exchanges, as well as comments praising the structuring and tireless efforts of the GRAHN, ISTEAH, and PIGRaN to promote the *empowerment* of girls and women in Haiti.

## International Conference on Girls’ Education

The head of the EGJ committee participated in the international conference on “Girls’ Education and Women’s Training in the Francophone Space: Challenges, Good Practices and Courses of Action” presented by the International Organization of La Francophonie (OIF) on June 18 and 19, 2019 in N’Djamena, Chad. The title of her presentation was “The Groupe de réflexion et d’action pour une Haïti nouvelle (GRAHN) advocates for improved and effective education for girls and women in Haiti; a sine qua non for the country’s development.”

During this conference, the different participants explored the root causes of inequalities, various forms of exclusion and discrimination against girls and women. One of the objectives of the conference was to reflect on ways and means to promote access to education and reduce failure and dropout.

## 4.5 Public Health

During this period, the Public Health Committee focused on three areas: participation in the steering of the AMHE-GRAHN Community Health Center project, facilitation of the Health Ed program and participation in the Mental Health Unit.

### The AMHE-GRAHN Community Health Center

A steering committee composed of about ten members has been set up to carry out the AMHE-GRAHN Community Health Centre project. Several members of the Public Health Committee are contributing to this project, notably by providing expertise in medicine, nursing and health care administration.

An important part of this committee's work was to raise the funds necessary to construct the building that will house the center in three phases. The Haitian Medical Association (HMA) of Canada and the United States, as well as the Ralliement des infirmières et infirmières auxiliaires haïtiennes de Montréal (RIIAH), played a significant role in this successful process. The steering committee began planning for the implementation of basic health care in conjunction with the management of Hôpital Sacré-Cœur de Milot. Sustained efforts were also successfully made to provide the AMHE-GRAHN Community Health Center with the medical and administrative equipment necessary for its operation (research, selection, collection and financing).

### The Éduc-Santé program

In an effort to increase health awareness in Genipailler, two educational programs were offered to the children of the EPC and to adults respectively. The children's program included:

- Workshops on hand washing, tooth brushing, examining the human body in the context of a doctor's visit, healthy eating;
- Workshops on stress, joy, fear and sadness management;
- musical awakening and playful workshops for Christmas and the end of the school year.

All of the workshops were held via videoconference every two weeks between October and June of each year. The adult program offered workshops on COVID, hand washing, tooth brushing, drinking water, heart disease and diabetes as it relates to food, the population health co-insurance program, healthy eating, waterborne diseases, environmental management and stress management. Adult meetings were held in 2021 on a monthly (or bi-monthly) basis as part of the GRAHN PEC program.

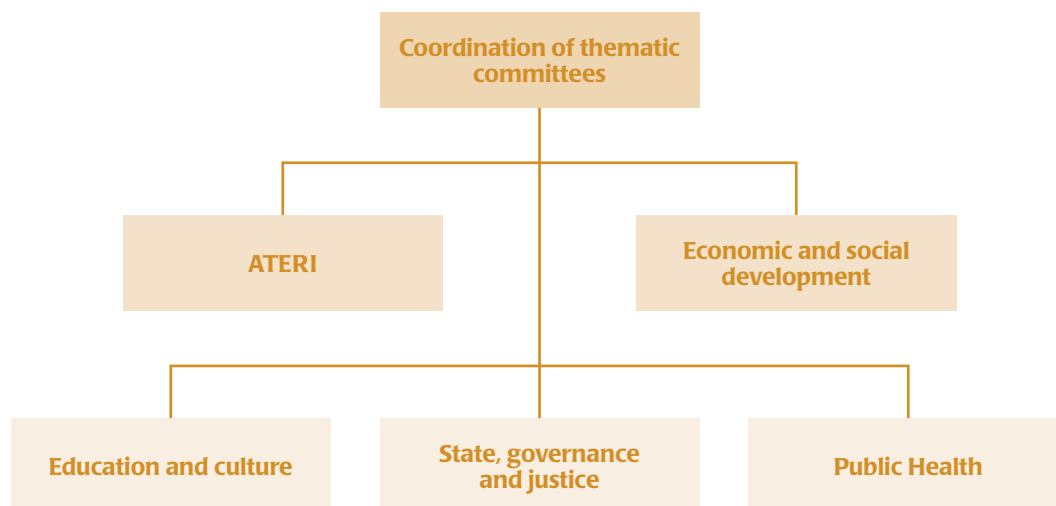
Finally, in the context of the pandemic, the committee conducted an extraordinary fundraising campaign, purchased and sent masks and cleaners to the CPE and the community of Génipailler. It also sponsored an anti-COVID education campaign for the same beneficiaries with the collaboration of Sacred Heart Hospital in Milot.

### The Mental Health Unit

The Mental Health Unit was created during the reporting period as a joint venture between ISTEAH and GRAHN. This unit works with the populations of the Cité du savoir and ISTEAH. It brings together general practitioners, psychiatrists, psychologists, nurses and social workers from four countries (Haiti, Canada, France, United States). About ten people are part of it.

## 5. THE PROGRAM COMMITTEE

The program committee is a coordinating structure for the activities of the thematic committees, as shown in Figure 42. It is placed under the responsibility of the Senior Vice President for Programs and Projects of GRAHN-World. This structure includes the leaders of the 5 thematic committees.



**Figure 42.** Thematic Committee Coordination Structure

The Program Committee closely monitors the work of the various thematic committees. All the projects presented in this report have benefited, if not from direct participation, at least from advice and various contributions from the thematic committees, very often through the program committee, which is the preferred place to discuss the projects from a holistic approach. Thus, projects such as ISTEAH, PIGraN - City of Knowledge, the journal *Haiti Perspectives* and the GRAHN-World International Press are discussed and enriched within the program committee.

More specifically, the Cité du savoir village project benefited from a significant contribution from the program committee. Indeed, this project integrates the following aspects

- ▣ Taking into account the reality of women in the community, including participation in communal life, the economic and community sphere;
- ▣ the village's urban plan and architectural concept;
- ▣ supply of drinking water and electricity;
- ▣ wastewater and waste management;
- ▣ social, community and environmental organization;
- ▣ economic development and job creation;
- ▣ Health and well-being (water, air, food, environment, mental health, physical activity);
- ▣ issues of sustainability, durability and governance.

All of these aspects were discussed and analyzed under the guidance of the program committee.

## 6. THE BOARD OF DIRECTORS

In this section, the composition of the Board of Directors, the process of regular Board meetings, and the recruitment process for new members are presented in turn.

### 6.1 Composition of the Board of Directors

For the period covered by this report, the Board of Directors consisted of the following 15 members:

- ▣ **Samuel PIERRE**, P.Eng. and Ph.D. - President
- ▣ **Michel JULIEN**, M.A. - Senior Vice-President Program and Projects
- ▣ **Dodly ALEXANDRE**, President GRAHN-Switzerland
- ▣ **Reynald ALTÉMA**, M.D. - President GRAHN-USA and Vice President Chapter Development
- ▣ **Carine BERNADEL** - Advisor
- ▣ **Jean-Marie BOURJOLLY**, PhD - Vice President Science and Technology
- ▣ **Valéry DANTICA**, Eng. - Treasurer
- ▣ **James FÉTHIÈRE**, Ph. D. - President GRAHN-Canada and Vice President Communication and Member Services
- ▣ **Mélissa GEORGES**, Eng, M.Sc. A. - Consultant
- ▣ **Dr. Kerline JOSEPH** - Vice President Social Justice and Human Rights
- ▣ **Raymond KERNIZAN**, M.Sc. - President GRAHN-France and Vice-President Financing
- ▣ **Marie-Hélène LINDOR**, M.D. - Advisor
- ▣ **Tatiana NAZON** - Vice President Internal Affairs and Secretary
- ▣ **Bénédique PAUL, Ph. D.** - President GRAHN-Haiti
- ▣ **Pierre TOUSSAINT**, Ph. D. - Consultant

**Note that** Reynald ALTÉMA replaced Ludovic COMEAU Jr. and Bénédique PAUL replaced Narcisse Fièvre during their terms of office.

### 6.2 Regular meetings

Board of Directors (BOD) meetings are held on a quarterly basis. Board members are committed to participating in the meetings and discussions on the agenda. A systemic approach is used to monitor the activities of the various branches. Regular agenda items include:



▣ *Review of regular topics*

At the beginning of these meetings, discussions are geared towards articulating a reconstruction framework for Haiti. Through the review of regular topics, we ensure that we remain alert to the political and social disruptions taking place in Haiti. We also address the business arising from the last meeting in order to bring closure to the discussions initiated at previous meetings.

▣ *News and general information*

At the beginning of these meetings, we share news relevant to the progress of the project and take the opportunity to highlight any outstanding recognition achieved by any of the board members.

▣ *Budget monitoring*

The treasurer of GRAHN-World presents a summary of the cash inflows and outflows to ensure transparency on the state of GRAHN's financial situation. He presented a report on the payment of dues and showed us the evolution of the financial statements.

▣ *Progress and financing of structuring projects*

The president of GRAHN-World gave an update of the deliverables of the different thematic committees and structuring projects, such as ISTEAH and PIGraN - City of Knowledge. This is to give the Board members an overview of the progress of the projects.

▣ *Activity report of GRAHN-World's branches*

Each branch president (Canada, Haiti, United States, France, Quebec and Switzerland) reports on the activities in progress. A rigorous follow-up is done to maintain the pace of activities.

## **6.3 Recruitment of new members**

The Vice President of Internal Affairs and Secretary of GRAHN presented the report on the recruitment of new members since the last board meeting. The members reviewed the membership application forms together and expressed objection or non-objection to each application submitted. Special consideration is given to applicants who are highly recommended by regular GRAHN members.

As an organization that favors a participatory approach to articulating a framework for rebuilding Haiti, GRAHN has a duty to inform its members about the status of its structuring projects.

As benefactors, members are expected to abide by the values of GRAHN in order to maintain the integrity of the organization as a whole. They agree to pay the annual membership fee and, upon joining, each member receives a letter of welcome from GRAHN. During this reporting period, we admitted approximately ten new members.

By becoming a member of GRAHN, individuals consent to receiving written communications, such as membership renewal notices and notices of general meetings, etc., via e-mail. At any time, members may inform us if they no longer wish to receive our communications.

## 7. CONCLUSION AND PERSPECTIVES

During the 2019-2021 period, GRAHN has tirelessly continued its fight towards a new Haiti. Several advances were made, not only in teaching and university research with the Institute of Science, Technology and Advanced Studies of Haiti (ISTEAH), but also at the preschool and basic levels with the Paul-Gérin-Lajoie Early Childhood Center and the Anne-Nelly-Saint-Preux Basic School of Génipailler. We have also developed vocational and technical training activities to introduce young people in the region to the construction trades. Some of these young people were later hired in our construction projects at the Cité du savoir. The magazine *Haiti Perspectives*, which has been running for 10 years, and the GRAHN-World Press complete GRAHN's knowledge dissemination ecosystem.

Our educational programs do not stop at formal training, but also extend to the community and adult settings. We have developed a Community Education Program (CEP) in the City of Knowledge that includes three components: citizenship education, health education and financial literacy. Parents of children attending the Cité du savoir and residents of the area participate in monthly training sessions coordinated by local officials and delivered via videoconference by trainers from Haiti, Canada and the United States.

If education at all levels, from early childhood to doctorate, has been made available to compatriots even in rural areas, GRAHN's action did not stop there. It has extended to health by setting up a preventive medicine program for the population of Génipailler, as a prelude to the AMHE-GRAHN Community Health Center that is currently being built there. This action is carried out jointly with our privileged partner, the Sacré-Coeur de Milot Hospital. In the same vein, we have created the ISTEAH Mental Health Unit which works in conjunction with GRAHN and which intervenes with the populations of the City of Knowledge and ISTEAH through its various sites, by teleconsultation using videoconferencing. This unit includes general practitioners, psychiatrists, psychologists, nurses and social workers, located in Haiti, Canada, France and the United States.

To remain in the trilogy Education-Health-Economy considered in general as the three pillars of development, we have designed a vast entrepreneurship program in the City of Knowledge, starting from a structuring project of GRAHN which is the Social and Solidarity Economy Investment Fund (FIESS). This program is spearheaded by PIGraN Incubator-Accelerator which operates in the City of Knowledge, but which already serves the entire Haitian territory and even beyond. Thus, five companies have already been created: Bureau d'ingénierie de la Cité du savoir (BICS), PIGraN Blòk, PIGraN Diò, PIGraN Agro-Industries, PIGraN Centre de services aux entreprises. A sixth company, PIGraN Enèji, is in gestation and should be born soon to supply solar energy to the City of Knowledge, the village of the same name and the entire locality of Génipailler. This will make GRAHN, like a lighthouse, a carrier of light in the literal and figurative sense of the term. Light which remains the essential ingredient for any human development project!

At a time when some of GRAHN's torchbearers are disappearing, we must work to create a new generation that shares our utopia of a new Haiti. For the work that is greater than each of us must survive our disappearance until it becomes reality. In the meantime, let us take the time to say a big thank you to all the fighters of the first hour and to those who join us in this battle of such great nobility, that of recreating a new nation that will eventually see the light of day by dint of believing in it, working on it and persevering.

# APPENDIX 1

## 2019 FINANCIAL STATEMENTS

### Groupe de réflexion et d'action pour une Haïti nouvelle – GRAHN-Monde

<b>Changes in net assets</b>		
Nets assets closed December 31, 2019 (not audited)	<b>2019</b>	<b>2018 (restated)</b>
<b>REVENUES</b>		
Grants	331 058 \$	247 637 \$
Donnations	56 297	47 015
Fundraising activities	27 111	31 097
	414 466	325 749
<b>EXPENSES RELATED TO ACTIVITIES</b>		
Expenses for ISTEAH project	328 049	236 861
Computer costs	54 435	–
Expenses associated with financing activities	18 914	18 842
Shipping and delivery of material	16 749	–
Expenses for Projet PIGRAN	–	44 110
Publication costs	–	13 880
Expenses for project PIGM	–	9 414
	418 147	323 107
<b>OPERATING COSTS</b>		
Interest on long term debt	7 600	7 865
Professional fees	6 868	–
Advertising and promotion	1 015	–
Interests and banking fees	736	483
Loss (gain) on money exchange	453	–
Representation fees	279	–
Office expenses	238	150
	17 189	8 498
<b>DEFICIENCY OF REVENUES OVER CHARGES</b>	<b>(20 870) \$</b>	<b>(5 856) \$</b>

## Groupe de réflexion et d'action pour une Haïti nouvelle – GRAHN-Monde

### Changes in net assets

Nets assets closed December 31, 2019 (not audited)	2019	2018 (restated)
<b>BALANCE</b>		
PREVIOUSLY REPORTED	14 981 \$	12 972 \$
PREVIOUS YEARS' ADJUSTMENT (note 2)	(84 726)	(76 861)
RESTATED	(69 745)	(63 889)
DEFICIENCY OF REVENUE OVER EXPENSES	(20 870)	(5 856)
<b>ENDING BALANCE</b>	<b>(90 615) \$</b>	<b>(69 745) \$</b>



## Groupe de réflexion et d'action pour une Haïti nouvelle – GRAHN-Monde

<b>Financial state</b>		
December 31, 2019	<b>2019</b>	<b>2018 (restated)</b>
<b>ASSETS</b>		
CURRENT ASSETS		
Cash	22 743 \$	61 513 \$
Temporary Placements (note 4)	15 000	15 000
	37 743	76 513
Placements (note 5)	6 697	6 697
	44 440 \$	83 210 \$
<b>LIABILITIES</b>		
SHORT TERM		
Creditors	5 000 \$	– \$
Interest due	–	10 400
Advances from a director (note 6)	17 555	17 555
	22 555	27 955
Long term debt (note 7)	112 500	125 000
	135 055 \$	152 955 \$
<b>NEGATIVE NET ASSETS</b>		
UNRESTRICTED NET ASSETS	(90 615)	(69 745)
	44 440 \$	83 210 \$

## APPENDIX 2

### 2020 FINANCIAL STATEMENTS

#### Groupe de réflexion et d'action pour une Haïti nouvelle – GRAHN-Monde

	2020	2019
<b>REVENUES</b>		
Subventions	303 005 \$	331 058 \$
Donations	37 080	56 297
Fundraising events	–	27 111
	340 085	414 466
<b>CHARGES LINKED TO THESES ACTIVITIES</b>		
ISTEAH project expenses	268 702	328 049
IT costs	50 700	54 435
Publication cost	10 521	238
Shipping and delivery of materials	6 152	16 749
Subcontractors	4 010	–
Expenses related to fundraising events	–	18 914
	340 085	418 385
<b>OPERATING COSTS</b>		
Long-term interests	6 942	7 600
Professional fees	4 000	6 868
Advertising	774	1 015
Baking fees	495	736
Currency exchange gain or (loss)	(249)	453
Entertainment fees	1 217	279
	13 179	16 951
<b>REVENUE SHORTFALLS</b>	<b>(13 179) \$</b>	<b>(20 870) \$</b>

## Groupe de réflexion et d'action pour une Haïti nouvelle – GRAHN-Monde

	2020	2019
BEGINNING BALANCE		(65 888) \$
REVENUE SHORTFALLS	(13 179)	(20 870)
BALANCE AT THE END	(99 937) \$	(86 758) \$
<b>ASSETS</b>		
SHORT-TERM ASSETS		
Cash	86 705 \$	26 600 \$
Short-term placements, at cost (note 3)	15 000	15 000
	101 705	41 600
PLACEMENTS, at cost (note 4)	6 697	6 697
	108 402 \$	48 297 \$
<b>LIABILITIES</b>		
SHORT-TERM LIABILITIES		
Loans	9 000 \$	5 000 \$
Interest due	6 942	–
Director's advances (note 5)	17 555	17 555
Donations and grants reported (note 6)	62 342	–
	95 839	22 555
LONG-TERM DEBT (note 7)	112 500	112 500
	208 339	135 055
<b>NEGATIVE NET ASSETS</b>		
UNRESTRICTED ASSETS	(99 937)	(86 758)
	108 402 \$	48 297 \$

## APPENDIX 3

### 2021 FINANCIAL STATEMENTS

#### Groupe de réflexion et d'action pour une Haïti nouvelle – GRAHN-Monde

	2021	2020
<b>REVENUES</b>		
Subventions	342 174 \$	303 005 \$
Donations	100 270	37 080
	442 444	340 085
<b>CHARGES LINKED TO THESE ACTIVITIES</b>		
Expenses ISTEAH project	379 235	268 702
IT expenses	52 209	50 700
Publication costs	–	10 521
Shipping and delivery of matériels	11 000	6 152
Subcontractors	–	4 010
	442 444	340 085
<b>OPERATING COSTS</b>		
Interests on long term debt	7 423	6 942
Professional fees	5 015	4 000
Advertising	40	774
Banking fees	613	495
Currency exchange gain or (loss)	34	(249)
Entertainment expenses	–	1 217
	13 125	13 179
<b>REVENUE SHORTFALLS</b>	<b>(13 125) \$</b>	<b>(13 179) \$</b>
<b>BEGINNING BALANCE</b>		
		(86 758) \$
<b>REVENUE SHORTFALLS</b>	<b>(13 125)</b>	<b>(13 179)</b>
<b>ENDING BALANCE</b>	<b>(113 062) \$</b>	<b>(99 937) \$</b>



## Groupe de réflexion et d'action pour une Haïti nouvelle – GRAHN-Monde

	2021	2020
<b>ASSETS</b>		
<b>SHORT-TERM ASSETS</b>		
Cash	78 594 \$	86 705 \$
Short-term placements	15 000	15 000
	93 594	101 705
PLACEMENTS, at cost (note 4)	6 697	6 697
	100 291 \$	108 402 \$
<b>LIABILITIES</b>		
<b>SHORT-TERM LIABILITIES</b>		
Loans	14 941 \$	9 000 \$
Interests due	14 365	6 942
Director's advances (note 5)	17 555	17 555
Donations and grants reported (note 6)	53 992	62 342
Long-term debt due next fiscal year (note 7)	112 500	–
	213 353	95 839
LONG-TERM DEBT (note 7)	–	112 500
	213 353	208 339
<b>NET NEGATIVE ASSETS</b>		
UNRESTRICTED ASSETS	(113 062)	(99 937)
	100 291 \$	108 402 \$







**GRAHN**  
POU YON AYITI TOU NÈF



Presses internationales GRAHN-Monde

Tous droits réservés © GRAHN-Monde